

IPO Essential or Partner Edition

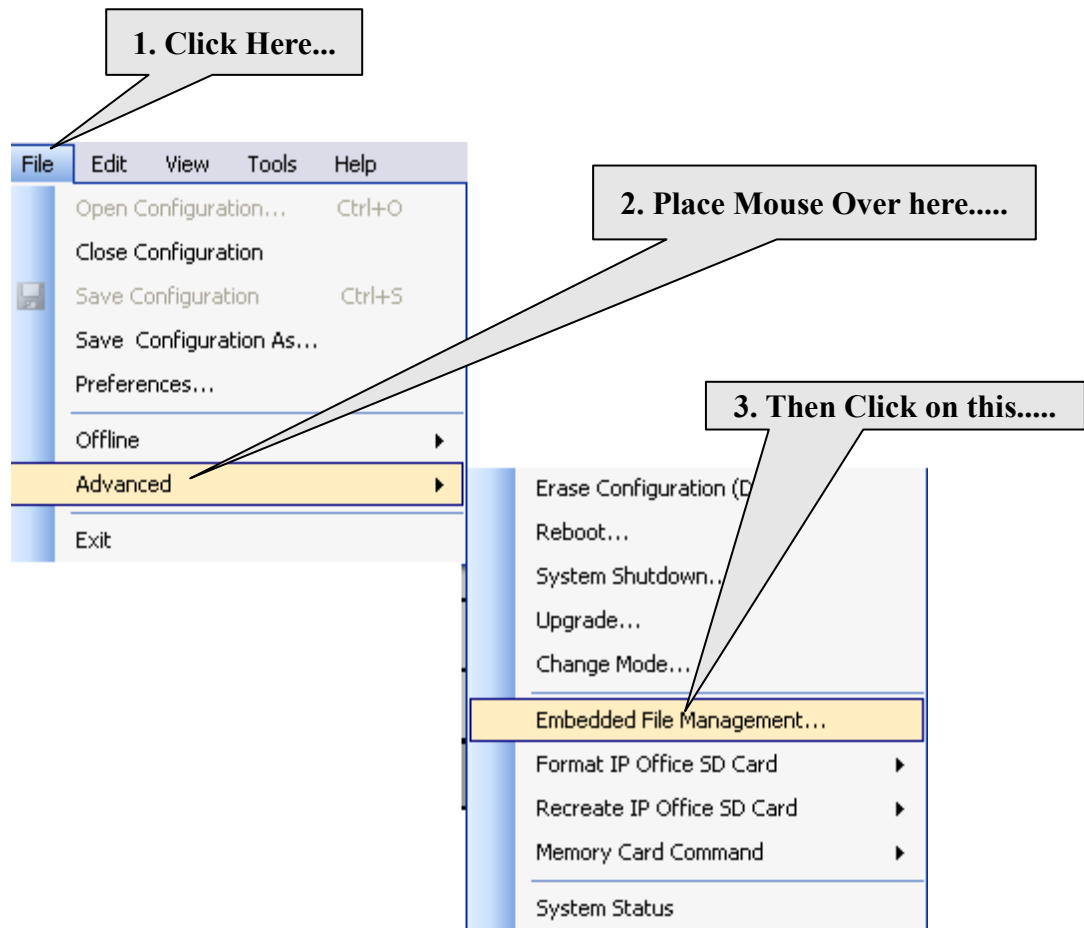
Upload System Files from Manager to SD Card

Telquest Tech Support

There are cases where the newest Binary (.bin) files are not transferred to the SD Card when Upgrading a KSU. This method will place the Binary Files in the SD Card.

You may need to turn off any firewalls in your computer. If the Upload fails, go back and turn it off.

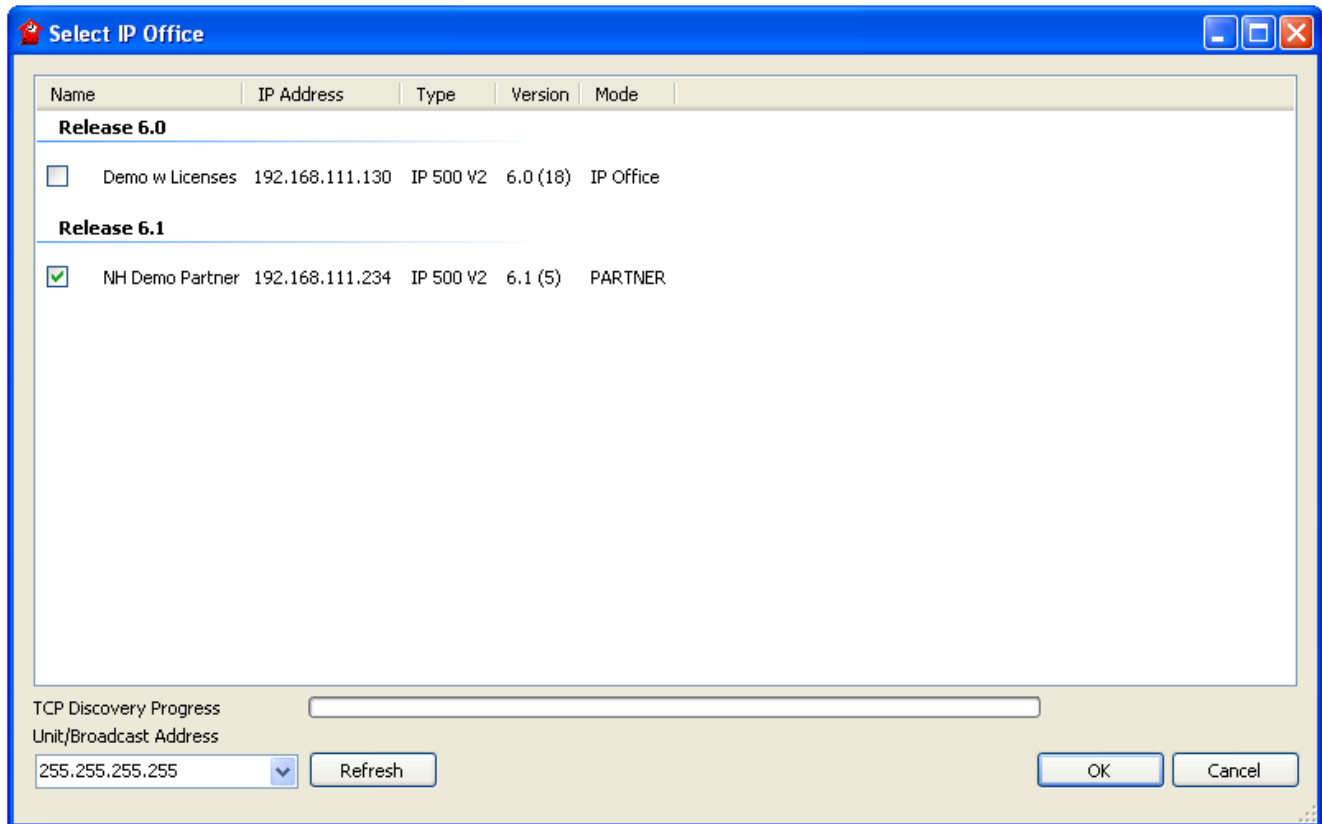
Run the Manager program and **DO NOT OPEN THE CONFIGURATION TO THE KSU.....**



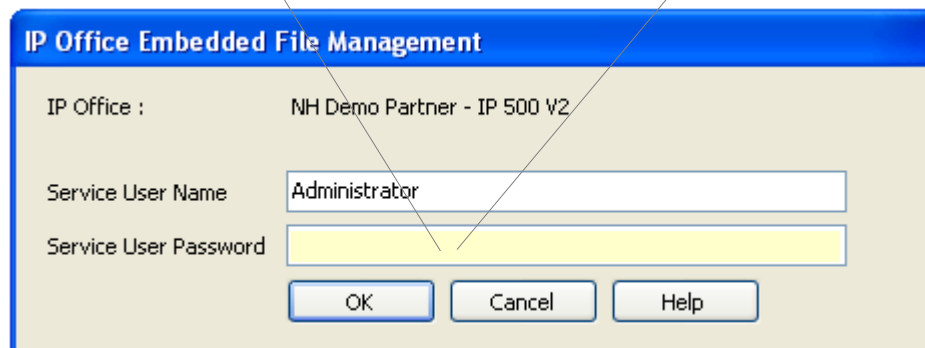
IPO Essential or Partner Edition

Upload System Files from Manager to SD Card

Now select and connect to your KSU



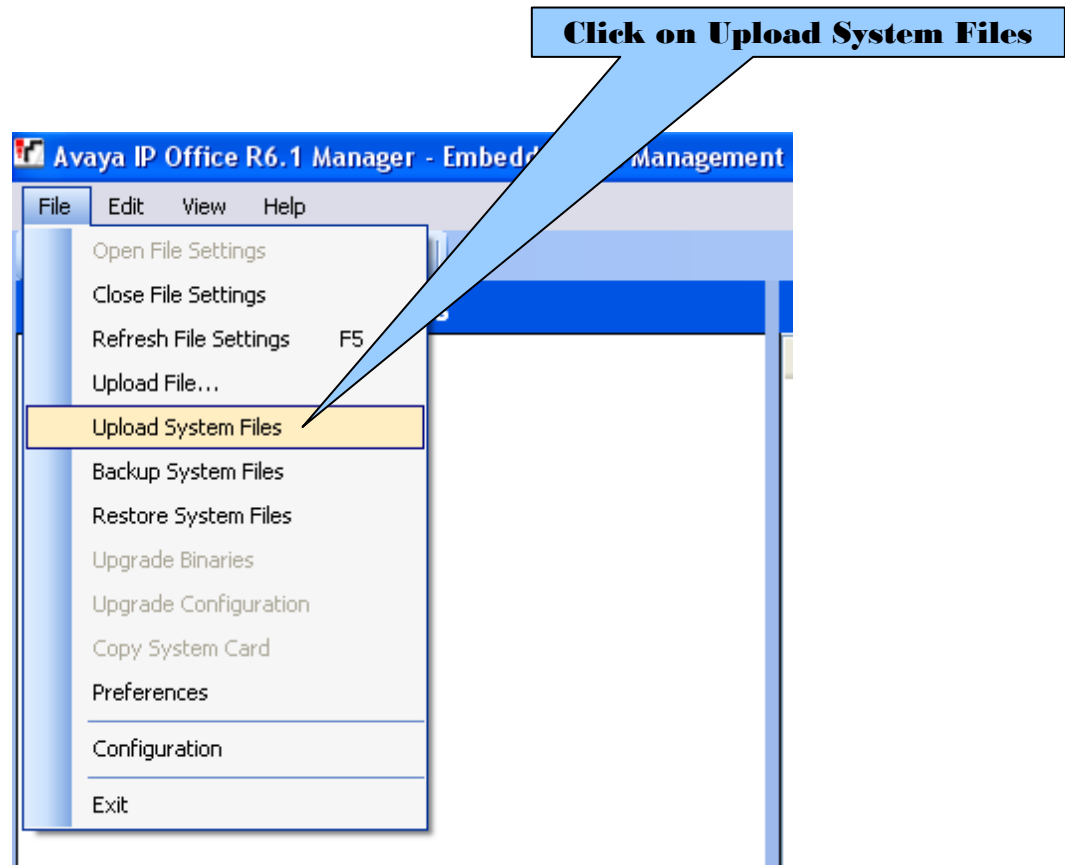
Then log on to it.....Use **Administrator** for IPO Standard or **password** for IPO Basic...



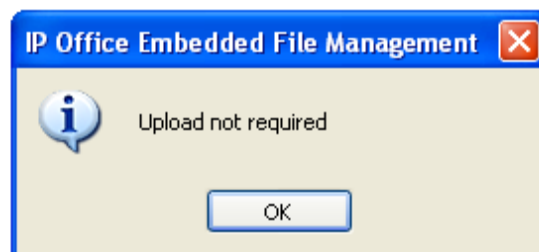
IPO Essential or Partner Edition

Upload System Files from Manager to SD Card

You will be directed to the Embedded File Management screen



If the updated files were already there, then it will say this:



IPO Essential or Partner Edition

Upload System Files from Manager to SD Card

If the Upload takes place it will take about 35 to 45 minutes.

You will see a Pop Up showing that the files are being transferred to the SD Card.

Note:

If you get a Pop Up message saying that a file is missing, just click the OK button.

The Pop Up may return up to 10 times. Just keep clicking OK.

It means that some of the foreign language files are missing.